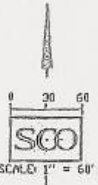


LEGEND:

- O - SET 5/8" REBAR W/ CAP STAMPED "P.L.S. 4332"
- II - SET R.R. SPIKE STAMPED "P.L.S. 4332"
- "S.E." - SLOPE EASEMENT
- "S.S.E." - SNOW STORAGE EASEMENT
- "B.P.E." - BICYCLE/PEDESTRIAN EASEMENT
- "D.E." - DRAINAGE EASEMENT
- "M.D.E." - MAIL DELIVERY EASEMENT
- NOTHING FOUND, DIMENSION POINT
- (O.A.) - OVERALL

CURVE TABLE:

CURVE	LENGTH	RADIUS	DELTA
C03	176.42	275.00	35°39'26"
C04	11.42	20.00	30°00'00"
C05	38.57	20.00	87°52'14"
C06	31.42	20.00	90°00'00"
C07	32.45	20.00	92°50'00"
C08	176.05	250.00	46°48'38"
C09	68.21	250.00	10°23'14"
C10	258.29	250.00	59°17'44"
C31	258.55	240.00	61°43'09"
C32	193.51	180.00	61°43'09"
C33	229.23	210.00	61°43'09"
C34	46.71	500.00	10°05'55"
C35	227.29	220.00	59°11'44"
C36	180.81	325.00	35°10'26"
C37	26.07	79.00	68°24'21"
C38	20.00	70.00	66°24'21"
C39	27.75	305.00	65°12'44"
C40	30.24	240.00	67°13'10"
C41	24.36	470.00	62°58'03"
C42	83.39	470.00	10°30'55"
C43	34.98	470.00	64°11'29"
C44	151.83	245.00	35°39'26"
C45	71.58	530.00	67°44'16"
C46	69.01	470.00	67°11'52"



FINAL MAP NO. 01-061
PINE FOREST
 At Truckee
 PHASE I
 BEING A PORTION OF THE N. 1/2 SECTION 10,
 TOWNSHIP 17 NORTH, RANGE 16 EAST, M.D.M.,
 IN THE TOWN OF TRUCKEE, NEVADA COUNTY, CALIFORNIA.
 AUGUST, 2002 SCALE 1"=60'



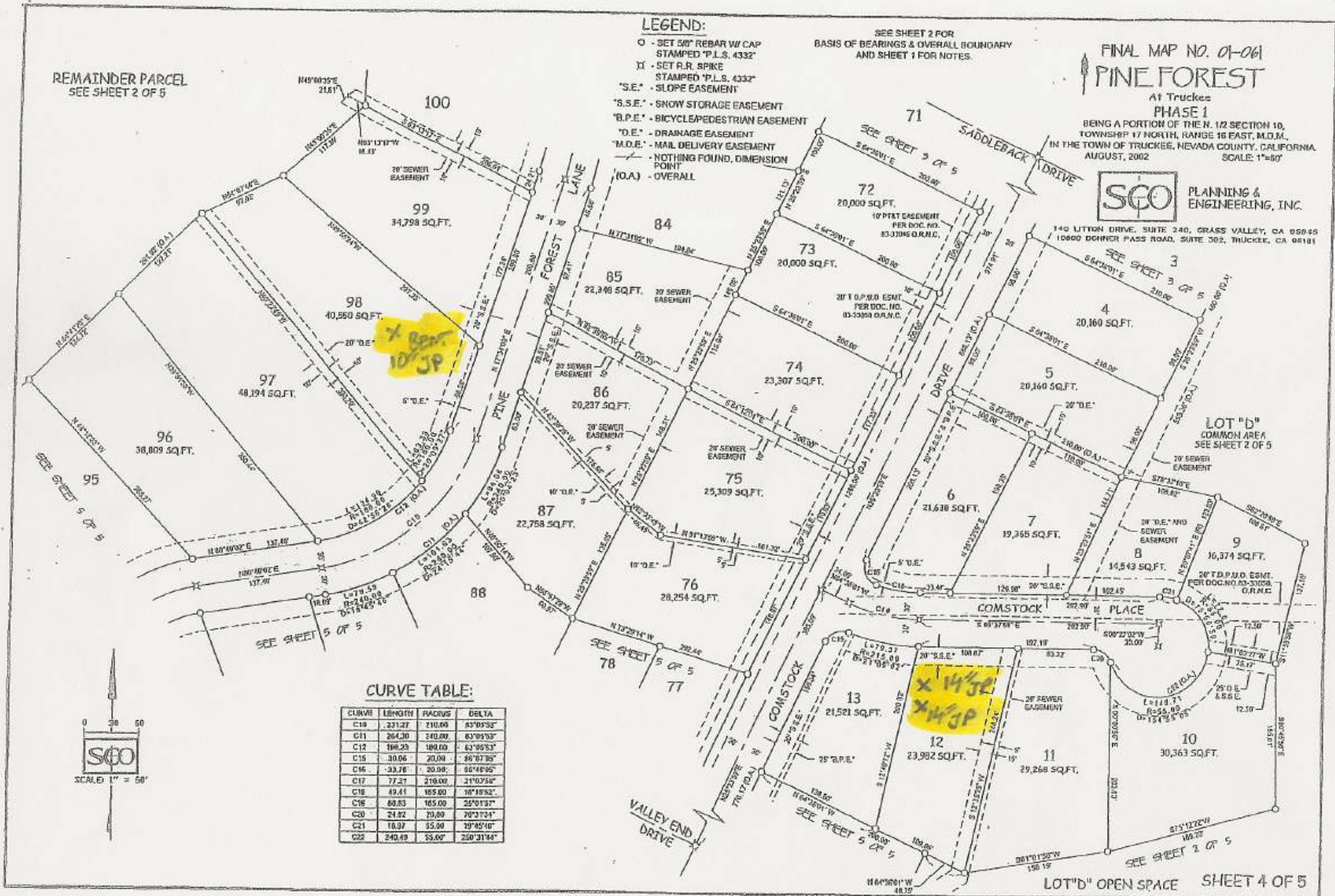
140 LITTON DRIVE, SUITE 240, GRASS VALLEY, CA 95945
 10800 DONNER PASS ROAD, SUITE 302, TRUCKEE, CA 96161

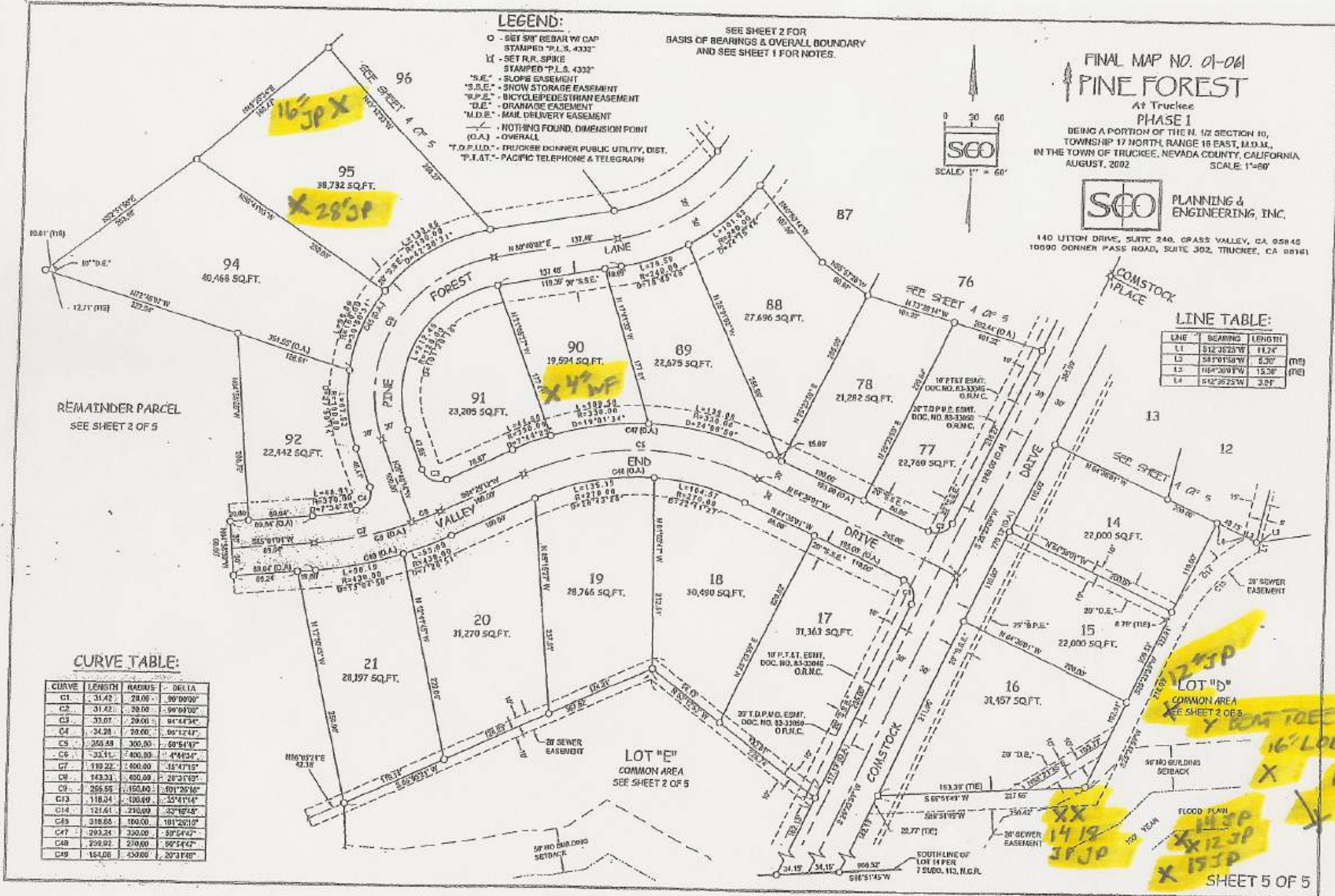
SHEET 3 OF 5

2024

Sub 8/98

SEE SHEET 2 FOR BASIS OF BEARINGS, OVERALL BOUNDARY AND SHEET 1 FOR NOTES





FINAL MAP NO. 01-061
PINE FOREST
 At Truckee
 PHASE I
 BEING A PORTION OF THE N. 1/2 SECTION 10,
 TOWNSHIP 17 NORTH, RANGE 18 EAST, R.D.M.,
 IN THE TOWN OF TRUCKEE, NEVADA COUNTY, CALIFORNIA.
 AUGUST, 2002 SCALE 1"=60'

SCO PLANNING & ENGINEERING, INC.
 140 LITTON DRIVE, SUITE 240, GRASS VALLEY, CA 95945
 10000 DONNER PASS ROAD, SUITE 302, TRUCKEE, CA 89416

2024 sub 8/98

FINAL MAP NO. 01-06
PINE FOREST
 At Truckee
 PHASE 2
 BEING A PORTION OF THE N. 1/2 SECTION 10,
 TOWNSHIP 17 NORTH, RANGE 18 EAST, T4D.M.,
 IN THE TOWN OF TRUCKEE, NEVADA COUNTY, CALIFORNIA
 JULY, 2003 SCALE: 1"=80'

SCO PLANNING &
 ENGINEERING, INC.
 140 LITTON DRIVE, SUITE 240
 GRASS VALLEY, CA 95945
 10800 CONNER PASS ROAD, SUITE 302
 TRUCKEE, CA 95121



LINE TABLE

LINE	LENGTH	BEARING
L50	23.00	S23°54'59"E
L51	123.02	S68°05'21"W
L52	285.27	S78°19'56"W
L53	221.24	S84°15'45"W
L54	367.10	S82°51'01"W
L55	121.03	N82°23'28"W
L56	35.80	S21°05'32"W

CURVE TABLE

CURVE	LENGTH	RADIUS	DELTA
C1	24.30	530.00	3°10'33"
C2	21.10	530.00	2°41'17"
C3	31.42	23.00	90°00'00"
C4	31.42	20.00	90°00'00"
C5	40.82	530.00	3°41'36"

LOT "F"
 5.81 acres

LEGEND: **X8LF**

- FOUND 30" REBAR W/ CAP STAMPED "P.L.S. 433C" PER PHASE 1 MAP
- ✕ SET F.L.T. SPIRE STAMPED "P.L.S. 433C"
- SET 30" REBAR W/ CAP STAMPED "P.L.S. 433C"
- ✕ NOTHING FOUND, DIMENSION POINT
- T.D.P.U.D. - TRUCKEE DOWNSIDE PUBLIC UTILITY DISTRICT
- S.E. - SLOPE EASEMENT
- S.S.E. - SNOW STORAGE EASEMENT
- D.E. - DRAINAGE EASEMENT
- P.T.S.T. - PACIFIC TELEGRAPH & TELEPHONE CO.
- P.U.E. - PUBLIC UTILITY EASEMENT

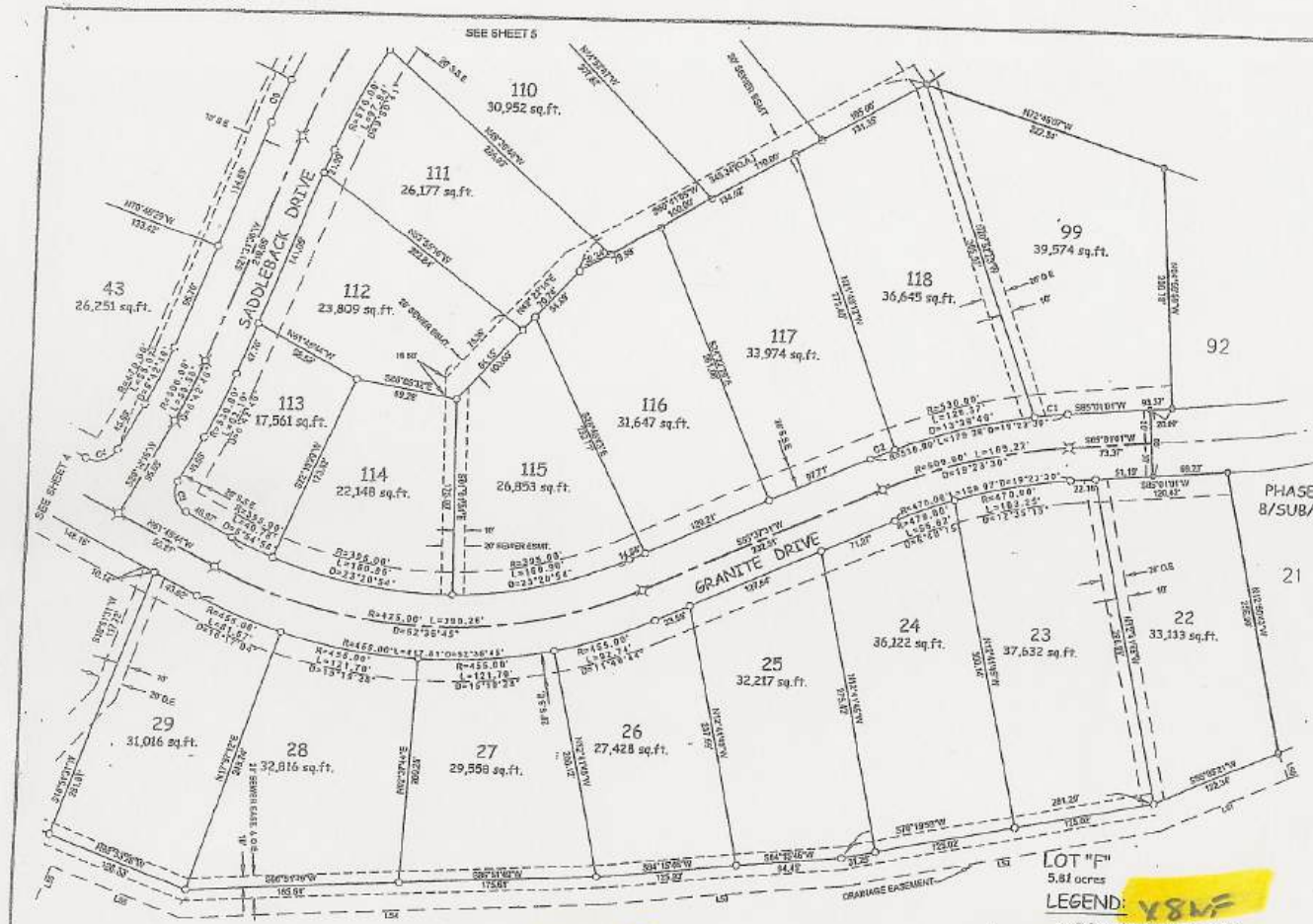
X10JP
 SEE SHEET 2 FOR
 BASIS OF BEARINGS & OVERALL BOUNDARY
 AND SHEET 1 FOR NOTES.

X16LP **X10JP**

SHEET 3 OF 6

2024

Sub 8/109 *DR*



LEGEND:

- - FOUND 5/8" REBAR W/ CAP STAMPED
- ⊗ - SET 3/32" PER PHASE 1 MAP
- ⊗ - SET P.R. SPIKE STAMPED "PLS 4332"
- - SET 5/8" REBAR W/ CAP STAMPED "PLS. 4332"
- ⊗ - NOTHING FOUND, DIMENSION POINT

- T.D.P.U.D. - TRUCKEE CONNER PUBLIC UTILITY DISTRICT
- "S.E." - SLOPE BASEMENT
- "S.E." - SHOW STORAGE EASEMENT
- "D.E." - DRAINAGE EASEMENT
- "TAT" - PACIFIC TELEGRAPH & TELEPHONE CO.
- "P.U.E." - PUBLIC UTILITY EASEMENT

LOT "G"
125.59 acres
SEE NOTE 5

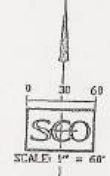
LOT "G"
125.59 acres
SEE NOTE 5

LOT "F"
5.81 acres

FINAL MAP NO. 01-061
PINE FOREST
A7 Tractee
PHASE 2
BEING A PORTION OF THE N. 1/2 SECTION 10,
TOWNSHIP 17 NORTH, RANGE 16 EAST, M.D.M.,
IN THE TOWN OF TRUCKEE, NEVADA COUNTY, CALIFORNIA,
JULY, 2005
SCALE: 1"=60'



140 LITTON DRIVE, SUITE 200
GRAND VALLEY, CA 92645
70220 DENVER PARK ROAD, SUITE 002
TRUCKEE, CA 95901



LINE	LENGTH	BEARING
L35	121.83	N85°5'28"W
L36	35.85	S71°08'32"W
L37	60.02	S89°13'16"W
L38	96.42	N22°18'58"W
L39	23.76	N54°31'01"E
L40	81.21	N83°52'57"W
L41	22.04	N57°35'31"W
L42	148.93	S57°02'59"W
L43	25.85	S27°59'54"W
L44	30.00	N82°04'04"W
L45	70.87	S87°55'56"W
L46	123.59	N87°10'18"W
L47	83.10	N87°49'05"W
L48	10.00	N42°12'57"E

CURVE	LENGTH	RADIUS	DELTA
C3	31.42	20.00	90°00'00"
C4	31.42	20.00	90°00'00"
C5	29.89	459.00	3°38'46"
C6	15.58	20.00	47°28'37"
C7	19.53	20.00	55°36'40"
C8	40.62	630.00	3°41'37"
C11	11.89	10.00	82°08'24"
C12	6.44	20.00	18°26'45"
C13	33.21	15.00	126°21'30"
C14	169.11	175.00	85°03'33"

SEE SHEET 2 FOR
BASIS OF BEARINGS & OVERALL BOUNDARY
AND SHEET 1 FOR NOTES.

2024 SUB 8109 DP

FINAL MAP NO. 01-06
PINE FOREST

A+ Truckee
 PHASE 2
 BEING A PORTION OF THE N. 1/2 SECTION 10,
 TOWNSHIP 17 NORTH, RANGE 18 EAST, N.D.M.,
 IN THE TOWN OF TRUCKEE, NEVADA COUNTY, CALIFORNIA.
 JULY, 2003 SCALE: 1"=60'



120 LITTON DRIVE, SUITE 340
 SPRING VALLEY, CA 95945
 10000 DONNER PASS ROAD, SUITE 002
 TRUCKEE, CA 95701



CURVE TABLE			
CURVE	LENGTH	RADIUS	DELTA
CB	41.00'	500.0'	34.13°

- LEGEND:**
- - FOUND 5/8" REBAR W/ CAP STAMPED "P.L.S. 4332" PER PHASE 1 MAP
 - ⊗ - SET 5/8" REBAR STAMPED "P.L.S. 4332"
 - - SET 5/8" REBAR W/ CAP STAMPED "P.L.S. 4332"
 - ⊗ - NOTHING FOUND, DIMENSION POINT
 - T.D.P. I.I.D. - TRUCKEE DONNER PUBLIC UTILITY DISTRICT
 - S.E. - SLOPE EASEMENT
 - S.S.E. - SNOW STORAGE EASEMENT
 - T.E. - TRAILING EASEMENT
 - P.T.E. - PACIFIC TELEGRAPH & TELEPHONE CO.
 - P.U.E. - PUBLIC UTILITY EASEMENT

SEE SHEET 2 FOR BASIS OF BEARINGS & OVERALL BOUNDARY AND SHEET 1 FOR NOTES.

SHEET 5 OF 6

2024 348 8/109 DPW

LOT "G"
 125.99 acres
 SEE NOTE 5



FINAL MAP NO. 01-06
PINE FOREST

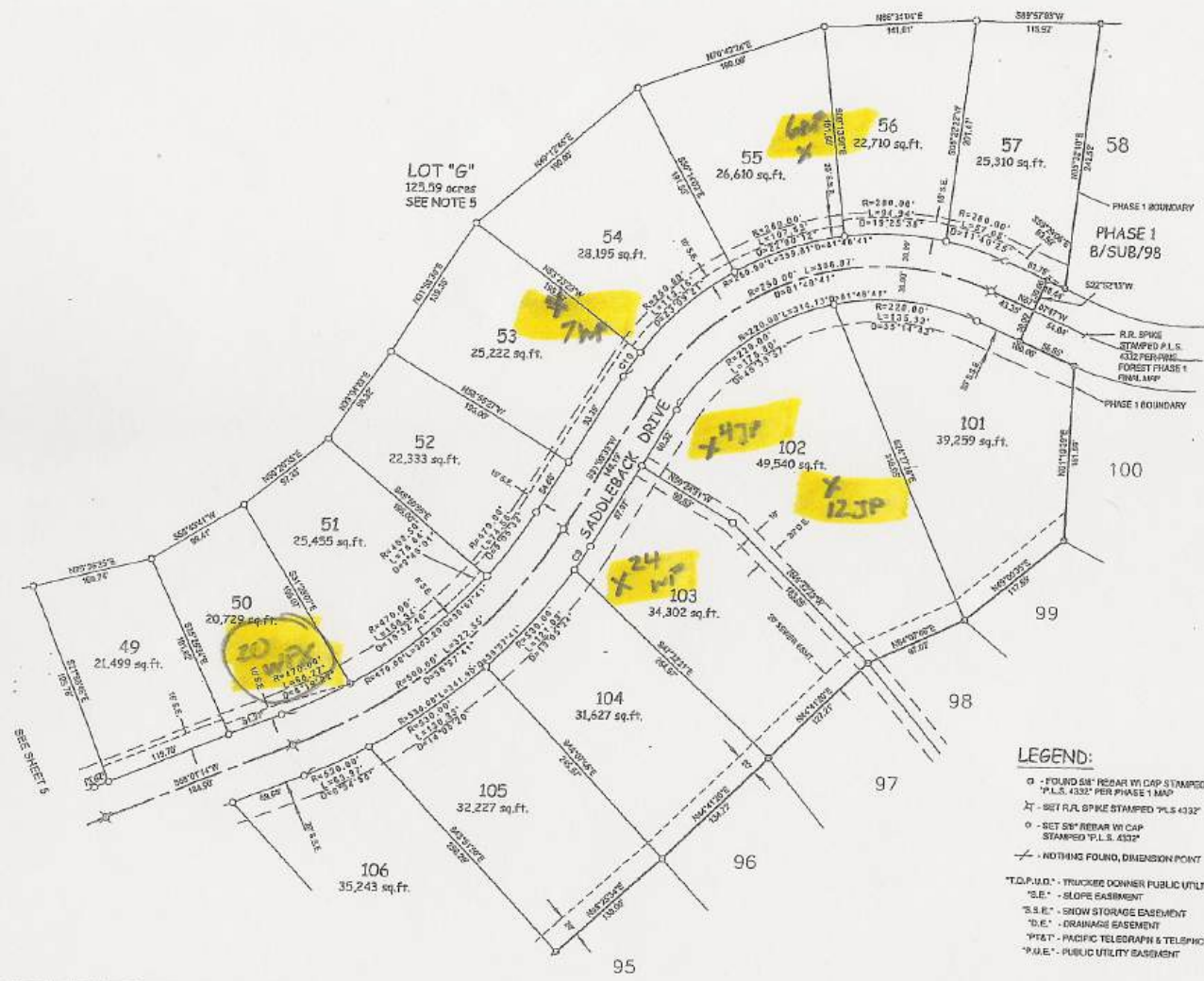
At Truckee
 PHASE 2
 BEING A PORTION OF THE N. 1/2 SECTION 10,
 TOWNSHIP 17 NORTH, RANGE 16 EAST, M.D.M.,
 IN THE TOWN OF TRUCKEE, NEVADA COUNTY, CALIFORNIA.
 JULY, 2003 SCALE: 1"=50'



160 LITTON DRIVE, SUITE 250
 GRASS VALLEY, CA 95958
 10000 DOKNER PASS ROAD, SUITE 002
 TRUCKEE, CA 95301



CURVE TABLE			
CURVE	LENGTH	RADIUS	DELTA
C8	26.52	330.00	2°59'01"
C10	27.13	280.00	5°33'04"



- LEGEND:**
- - FOUND 5/8" REBAR W/ CAP STAMPED "P.L.S. 4332" PER PHASE 1 MAP
 - ⊗ - SET R/L SPIKE STAMPED "P.L.S. 4332"
 - - SET 5/8" REBAR W/ CAP STAMPED "P.L.S. 4332"
 - ⊗ - NOTHING FOUND, DIMENSION POINT
 - T.O.P. M.D. - TRUCKEE DOKNER PUBLIC UTILITY DISTRICT
 - "S.E." - SLOPE EASEMENT
 - "S.S.E." - SHOW STORAGE EASEMENT
 - "D.E." - DRAINAGE EASEMENT
 - "P.T.E." - PACIFIC TELEGRAPH & TELEPHONE CO.
 - "P.U.E." - PUBLIC UTILITY EASEMENT

SEE SHEET 2 FOR BASIS OF BEARINGS & OVERALL BOUNDARY AND SHEET 1 FOR NOTES.

2024
 sub 8/107
 DPW